



2024 RAGMS Gem and Mineral Show

Directors' Auction Program



Saturday night, March 16. Auction begins at 5:30 pm

This year's Director's Auction will benefit the RAGMS Workshop with items being donated by both the Crater Rock Museum and the RAGMS Workshop. Every year the Board of Directors has an auction at its annual Gem and Mineral Show to raise money for the specific needs of the Museum and RAGMS. This year, it's the Workshop. The money will go towards hiring a licensed electrician to upgrade the workshop electrical layout. This will allow people to work on all the available machines at the same time without flipping breakers. Any leftover funds will go to purchase sawblades. As an FYI, the average price of a blade is \$400 while the most expensive one we need to buy is 36 inches in diameter and rings the bell at \$1,000.

For those of you who knew them, or know of them, Barbara and Bob Jacobsen were longtime active volunteers and supporters of RAGMS and the Crater Rock Museum. In their passing they donated many of their specimens to the club and those specimens are currently in display cases in the museum. They only owned the best. They collected the best. They finished and polished the best. And tonight, a few of those specimens are available for you to bid on. You have a chance tonight to purchase one of these magnificent specimens to add to *YOUR* collection.

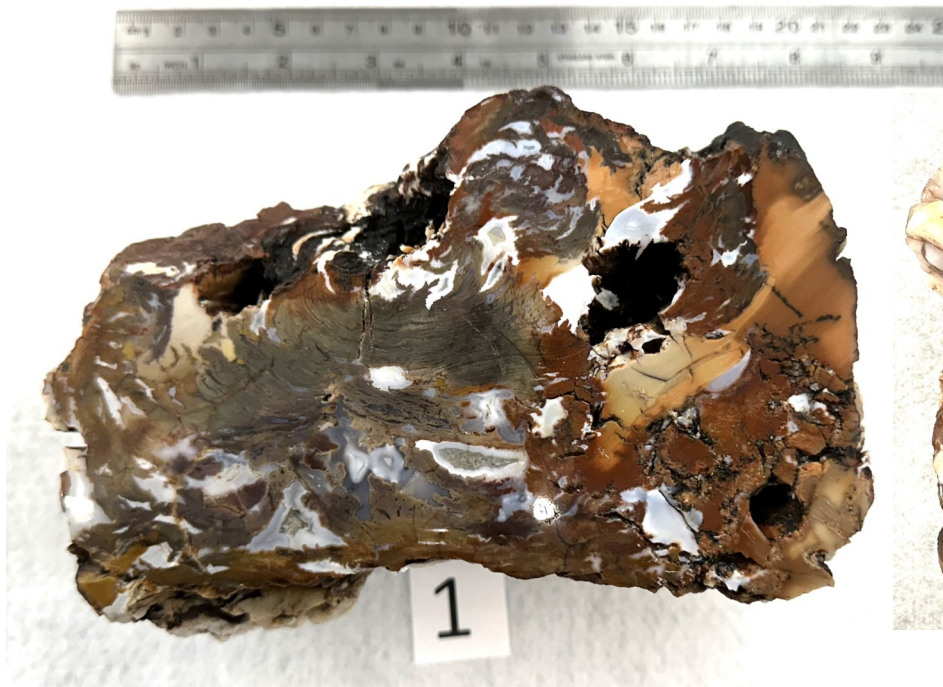
A few of these "lots" have multiple items. The bid is per item, which means the winner gets their choice of the item. If they want both - it's the winning bid x 2. If the winner only wants 1, then the item will go up for auction again.

Every year this auction raises a lot of money, and we hope that this year is no different. The museum and workshop dug deep to get AMAZING and ONE-OF-A-KIND specimens for you to bid on tonight.

Now it's time for *YOU* to dig deep to take advantage of this opportunity to buy these one-of-a-kind specimens. You may never see these items (or these kinds of items) available for purchase again.

****Disclaimer*** - All items up for auction were researched to the best of our ability and are presented as to what they are and from where they possibly originated. We are not responsible for incorrect attribution or identification. The provenance, if known, is included in the item description. All items purchased the night of the auction are done so "as is where is". None of the photos were retouched to fix flaws or color corrected, although a few were slightly "brightened" to correct lighting irregularities. Sizes listed are approximate and are photographed with a ruler to better show the size of the specimen.

All items will be on display in a locked case the day of the sale, March 16 on the sales floor for buyers to inspect. Personal inspection can be done between 5:00 and 5:30 the night of the sale.



1 Roxy Ann Petrified Wood - Jacobsen donation

This piece of petrified wood can be considered “old stock” since this has been in the Jacobsen collection for a long time and color like this has not been found in this area for years. Roxy Ann is a local, petrified wood specific to this southern Oregon area (Roxy Ann!) and unique in its color and form. There is no other petrified wood that looks like this. The polished face on this is 6½” x 3½” (left photo). Right photo shows side of wood. Cut and polished in the RAGMS Workshop.



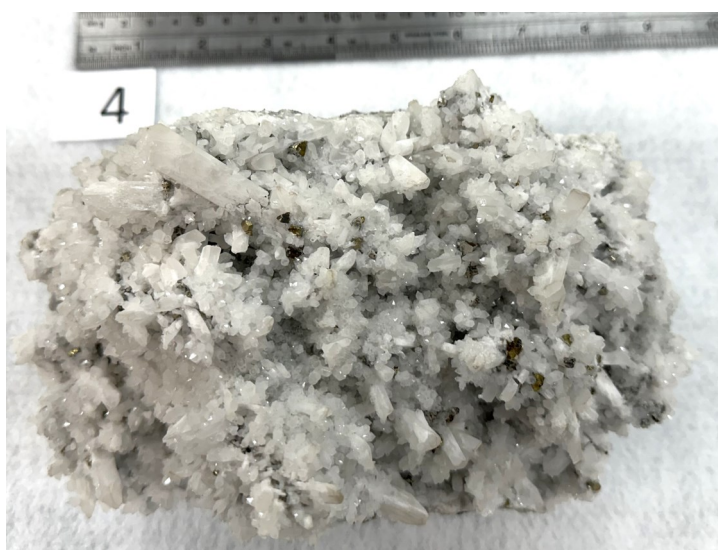
2 Blue Mountain Jasper - Jacobsen donation

Blue Mountain Jasper is considered one of the finest porcelain jaspers found in Oregon. This jasper is found on the south end of the Blue Mountains just north of McDermitt. Blue Mountain is readily identifiable by it’s blue color and orbs present in the Jasper. The polished face on this is 4” x almost 5”. Cut and polished in the RAGMS Workshop.



3 Dry Head Agate - Jacobsen donation

Dry Head Agate is a very distinctive agate due to its banding and color. This is an exceptional piece because the banding is clear and distinct. There is a slight black band to distinguish the separation of the colored bands. This piece polished by RAGMS Workshop.



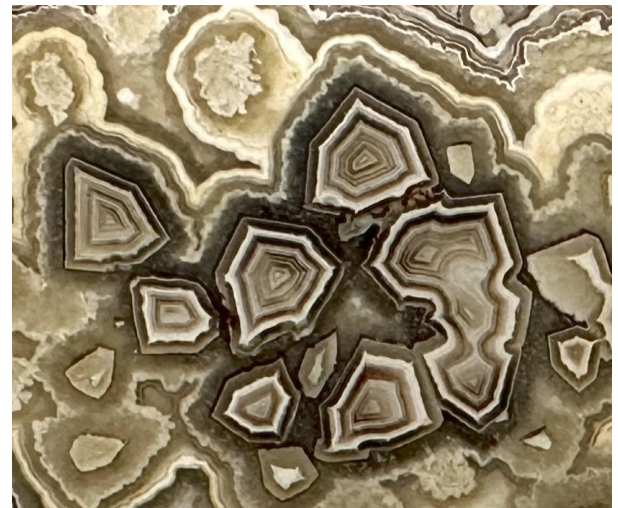
4 Quartz on Pyrite

Do you like quartz? Do you like gold color? Maybe a flash of silver? Do you like crystals? Sparkle and bling? This specimen has all that and more. This “winter wonderland” of a specimen will sparkle in your collection. Don’t believe us? See it in person! This piece is 8” x 6” and the crystal portion is 4” high.



5 Faden Quartz - RARE

Faden Quartz is also known as a “tabular” crystal meaning it is “flatish” or “tablet-like”. They have lengths and widths much larger than their thickness. This is not a common shape and these crystals form in fissures in a host rock that widens steadily. These are rare and very seldom come up for auction. If you are looking for something rare to add to your collection - today is your lucky day! The crystal portion is about 12 x 7.



6 Mexican Crazy Lace Nodule Slabs (2 pieces) - Jacobsen donation

These two Mexican Crazy Lace slabs probably originated from the Chihuahua region of Mexico. Notice the angular and interesting shapes in the center of the smaller slab. This is very unusual for a crazy lace specimen. These two slabs are going up for auction at the same time, but bidder is only bidding on one - when they win, they get their choice. If they want both, it's winning bid x 2. If only one is chosen, the other will go up for auction again.



7 Mexican Crazy Lace Chunk

What's not to love about this specimen? It stands up, has amazing color, amazing design, every flat side is polished, and there is pink druzy on the back side. Remember when it was mentioned that these items are one of a kind and you may never see another one like it? This is what we are talking about. Don't miss this opportunity to own this! Polished in the RAGMS Workshop.

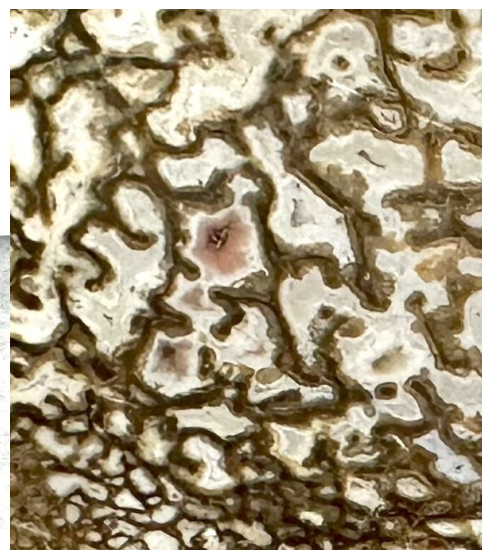
8 Bat Cave Rim Jasper - RARE

This jasper is from the Ochoco Reservoir near Prineville, Oregon. This is a home-grown specimen. This jasper was formed in lava tube where bats lived. And we all know that part of Oregon is very volcanic.

The sediment on the cave floor built up by silica-rich water which, over time, created a thin layer of jasper. (This is not considered petrified bat guano but one can't discount the contribution of the bats). Why is this rare? Bat Cave Rim Jasper was mined out years ago and there is none left to collect.

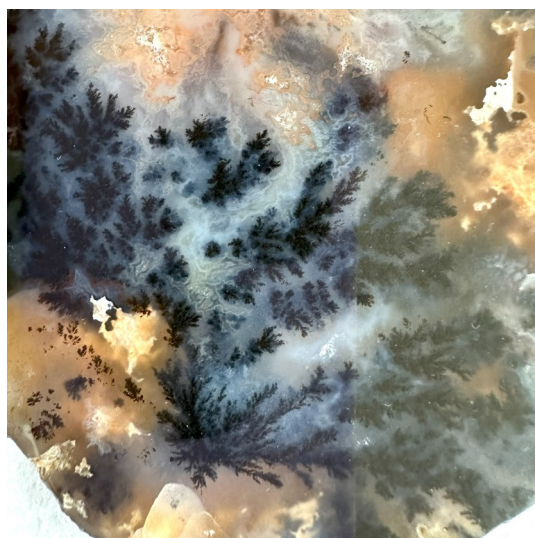
Size is 2" x 1¼". This is a rare specimen and you finally have the opportunity to own it!





9 Dinosaur Bone - Jacobsen donation

Yes, this is a real petrified bone from a real dinosaur. This specimen has excellent cell structure with nice color and desirable contrast. Look closely and you can even see some pink agate within the cells. The polished face on this is 2¾" x 2".



10 Dendritic Agate Slab - Jacobsen donation

The "fern-like" structures in this agate are known as dendrites. The mineral is most likely manganese. These dendrites are a beautiful black as they contrast with the white, salmon, blue, gray, and tan colors of the agate. the location where this agate was found is unknown. The polished face on this is 7½" x almost 5".



11 Laguna Agate - Jacobsen donation

This beautiful Laguna Agate is from Chihuahua, Mexico. It is a remarkable specimen with gorgeous colors and distinctive banding. This slab is polished and ready for display or a custom jewelry piece.



12 Knives - Jacobsen donation

These two knives came from the Jacobsen collection. We don't know much about them as to who made them or when. The top knife (we believe) is made from jade or bowenite with an antler handle. The bottom is heat-treated knapped agate with a textured white handle. Blade length for both is $3\frac{1}{4}$. These two knives are going up for auction at the same time, but bidder is only bidding on one - when they win, they get their choice. If they want both, it's winning bid x 2. If only one is chosen, the other will go up for auction again.



13 Quartz Amethyst Stalactite

This slab of amethyst has the traditional purple color, but since it is cut this way, the color appears as banding. The center consists of a brown and gray agate. This particular piece is stalactite which most amethysts are not. Due to color variations with the camera and lighting, this might not appear as purple as it actually is. The polished face on this is 7 1/4" x 5".



14 Fossil Fish Mortality Plate from the Green River Formation - Jacobsen donation

There is no other way to say it except this is a museum quality specimen. The only reason this isn't in the Crater Rock Museum is because they already have one. This is unique because there is over 50 fish in this specimen are all on the same plate - which is why it is called a "Mortality" plate. You can see the entire fish impression and each one has good color. It's rare that this kind of item comes on the market. This may be your only opportunity to buy a specimen such as this. The size of this plate is 20" x 9".